


# HEALTHIER BUILDINGS KEEP EVERYONE HEALTHIER TOGETHER

New Facility Challenges Met by an Established Industry Leader





Healthier spaces mean healthier people. The idea of healthy buildings has been rebuilt from the ground up. Occupant wellness requires a fact-based, expert developed, and dynamic approach: one that helps mitigate both air and surface-based pathogen risks, while also increasing efficiencies and the financial health of facility operations.

Disinfection of surfaces and air has become a standard expectation for occupants. No other provider offers both surface and indoor air quality solutions for infection control. The combined strengths of EnhancedClean and EnhancedFacility offer a comprehensive, customized solution for protecting both people and places.



# Minimizing Risk with a Data-Informed Approach

**No two facilities are alike, so no two approaches to building wellness can be, either.**

Starting with the **Healthy Building Risk Assessment**, we develop a data-informed strategy to mitigate your facility's risk level and provide an actionable framework of solutions. We can help facilities deliver the promise that, "Yes, we have done everything within our control to help keep you healthy here." From the surfaces you touch to the air you breathe, together our programs offer more protection from every angle of building wellness.

Plus, ongoing data and monitoring such as ATP evidence-based testing, service validation reporting with our Digital Cleaning Log, and indoor air quality testing helps glean actionable insights to fine-tune your facility's services to maximize health and safety for the long term.



Take the next step towards a healthier, safer space for your occupants.

Schedule your Healthy Building Risk Assessment today at [EnhancedFacility.com](https://EnhancedFacility.com).



## **Developing an Ongoing Action Plan to Meet Your Facility's Unique Needs**

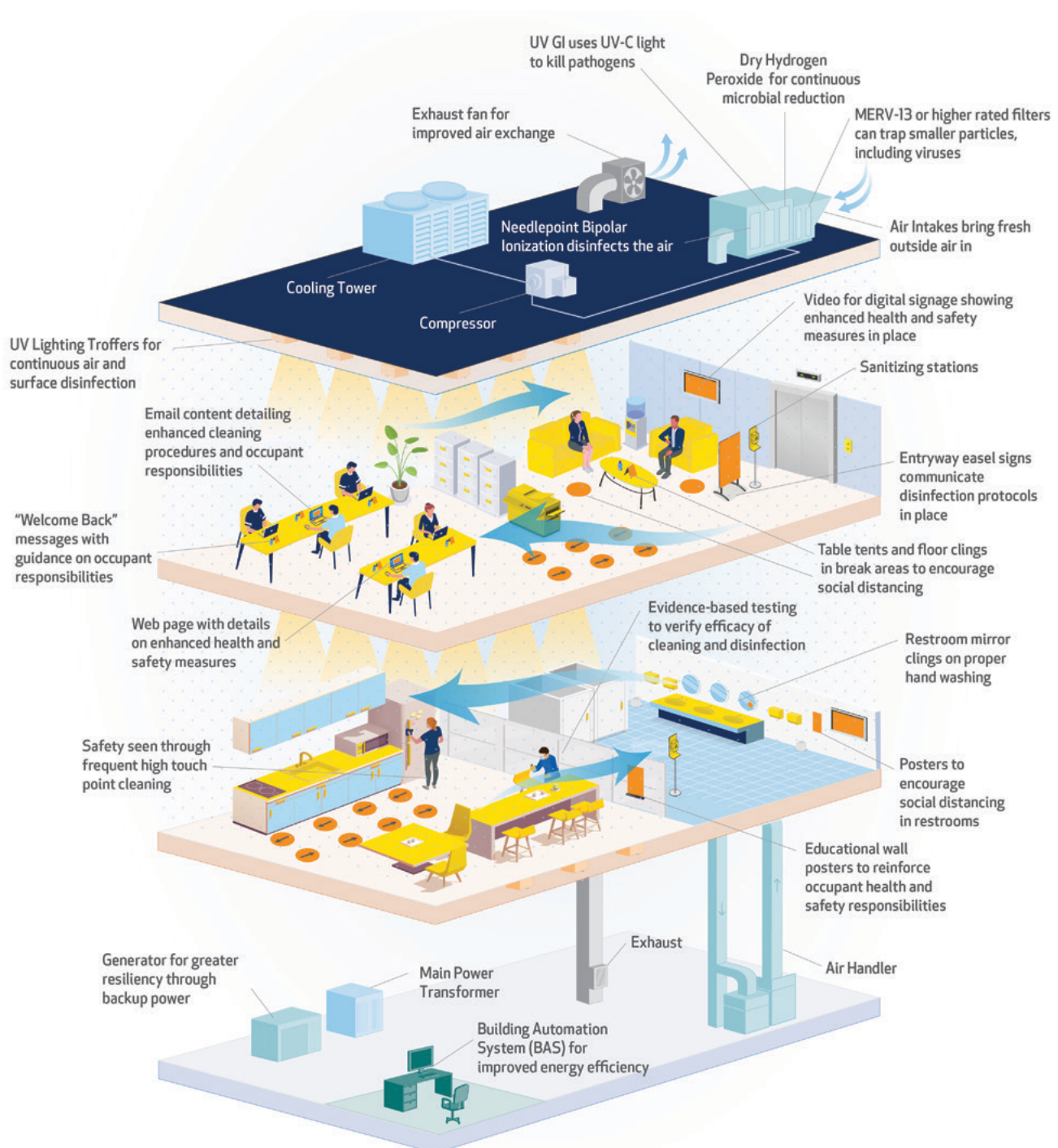
The Healthy Building Risk Assessment is just the beginning. After assessing all systems and conducting a detailed walk-through, a set of recommendations around air quality, surface disinfection, facility resiliency, and more are formed. Using these findings, ABM can help formulate a strategic approach to overall building wellness. These recommendations can be thought of as a road map to improving building health, prioritizing the strategies with the most immediate impact.

After program implementation, ongoing results and data from repeated assessments will be useful to recalculate risk and implement supplemental solutions that can scale as your occupancy increases.



# What helps make a healthy building?

**Air quality improvements, surface disinfection, and occupant communication working together to reduce viral transmission**



# Keep Occupants Healthier by Ensuring Healthier Air Indoors

ABM's EnhancedFacility program provides facility services and solutions focused on improving indoor air quality (IAQ) to foster better occupant wellbeing through improved building health, safety, and efficiency. We can help you implement effective strategies you need to improve IAQ and help reduce pathogen transmission.

There are several new and advanced technologies for biohazard disinfection of the air and surfaces that may be effective depending on the unique needs of the facility, including needlepoint bipolar ionization technology within

HVAC systems, dry hydrogen peroxide generation, and far-UV and UV-C lighting technologies. These specific recommendations help prioritize budgets to focus on actions that will make the most impact.

ABM can also help with funding options. We have access to public and private loan programs which could be paid for by savings realized with a Professional Service Agreement (PSA).



## Facility Services And Solutions Focused On Improving Indoor Air Quality (IAQ)



### STEP 1



#### Healthy Building Risk Assessment

- Assessment of your facility's risk level based on severity of hazard and likelihood of incidence
- HVAC inspection
- Effectiveness of disinfection protocols
- Turnkey financial solutions

### STEP 2



#### HVAC System Optimization Methods for improving IAQ and overall building health

- Ventilation and humidity control
- Proper filtration
- HVAC disinfecting technologies
- Building controls



#### Disinfecting Lighting Solutions

Enables continuous disinfection of air contaminants.



#### Touchless Fixtures and Doors

Reduces the number of high-touch surfaces within a facility.

### STEP 3



#### HVAC Preventative Maintenance

- Promotes optimum filtration and disinfection
- Saves energy
- Prevents unnecessary repairs
- Extends the life of your system



#### Energy Efficiency Upgrades

Reduces operating costs to move funding into other facility improvements.



#### Electrical Preventative Maintenance

Mitigates life and safety risk, reduces downtime and increases reliability.

Visit [EnhancedFacility.com](https://EnhancedFacility.com) to learn more.

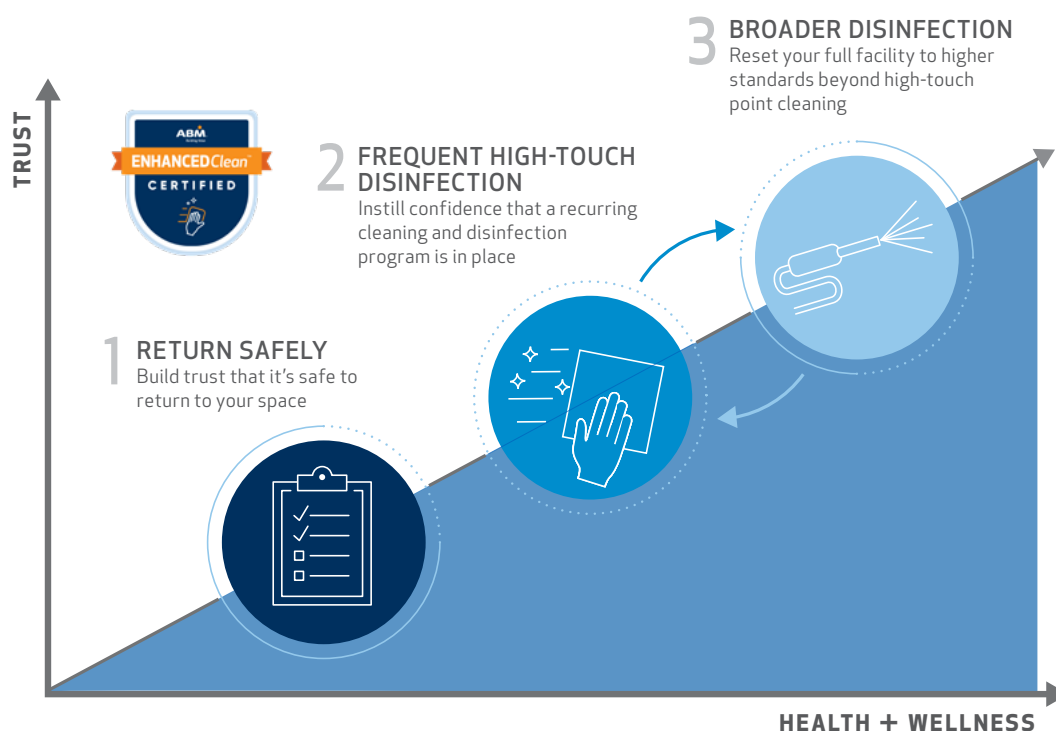


# A Three-Step Approach to Creating Healthier Surfaces

Providing constant peace of mind to your occupants is vital. There is a heightened sense of scrutiny for demonstrating that you are doing your part to provide clean, healthy, and safe environments. The ABM EnhancedClean™ program is a three-step approach that delivers healthy spaces with a certified disinfection process backed by experts.

We help clients operate safely, navigate change, and deliver assurance by demonstrating trustworthy cleaning and disinfection. We do so through consistent intervals of frequent high touch point and broad disinfection, all delivered by a reliable partner dedicated to innovating ways to create healthier spaces. Our certified process is developed in partnership with our Expert Advisory Council, which includes board certified experts in infectious disease and industrial hygiene.

## An Industry-Defining Standard of Cleaning and Disinfection





# The Right Step for the Right Time

## Complement Existing Cleaning Service Standards with Frequent Disinfection

Every building is unique, but what all facilities have in common is the ongoing need for preventative practices and regular disinfection to improve the health and wellness of the building and its occupants.

We can help you meet the evolving challenges of reentry and ongoing facility services, supplemented by broad disinfection technologies to cover every angle of building wellness.

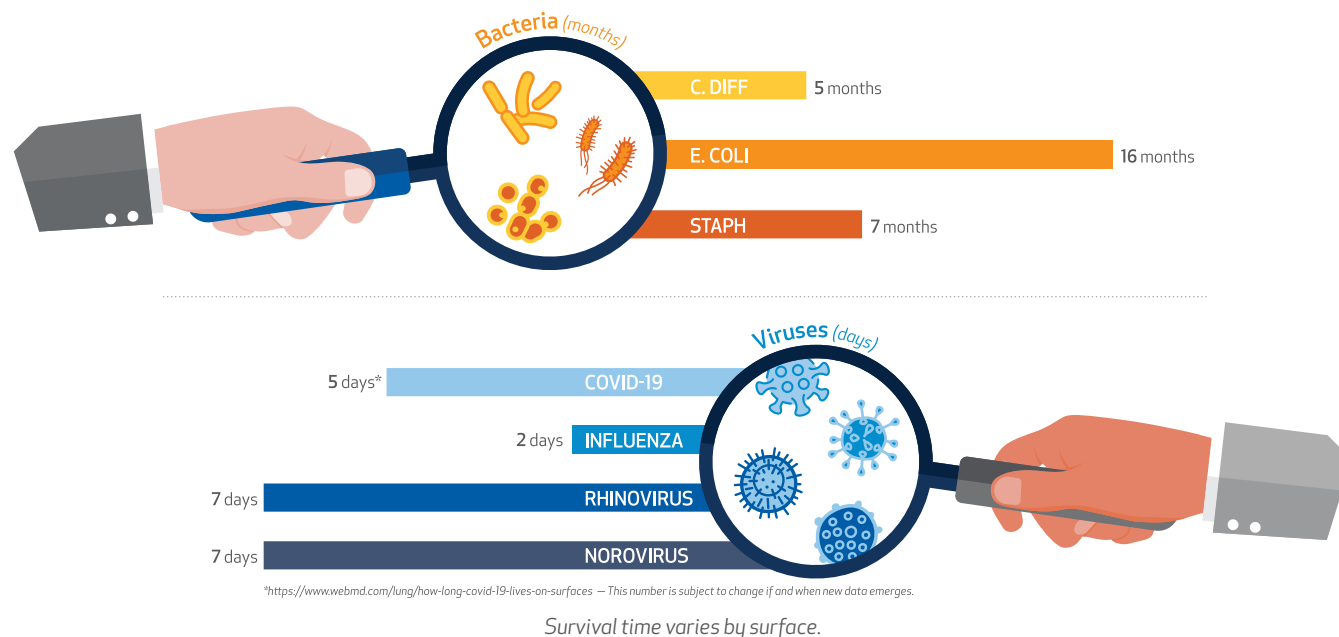
	Suggested Frequency	Methods Employed	Team Members Deployed	Potential Supplies and Equipment
<b>Step 1: Return Safely</b> Build trust that your facility is a safe environment for occupants.	Intervals based on reentry	<ul style="list-style-type: none"> <li>Site assessment(s) using reentry checklist and our Healthy Building Risk Assessment to inform return to work or occupancy scaling strategy</li> <li>Workforce protocols (i.e. PPE &amp; social distancing procedures)</li> <li>Implement preventative products strategy</li> <li>One-time enhanced clean</li> </ul>	Certified disinfection specialists	<ul style="list-style-type: none"> <li>No-touch fixtures, dispensers &amp; door openers</li> <li>Centralized trash receptacles</li> <li>Sensor technologies</li> <li>Hand-sanitizing stations (based on availability)</li> <li>Disinfecting wipes for occupants (based on availability)</li> <li>EPA-registered disinfectants qualified for use against SARS-CoV-2</li> </ul>
<b>Step 2: Frequent High-Touch Disinfection</b> Instill confidence that a recurring cleaning and disinfection program is in place.	Intervals range from hourly to daily	<ul style="list-style-type: none"> <li>Site-specific SOW for each facility type based on occupancy levels</li> <li>Cleaning and disinfection of all high touch point areas in facility</li> <li>Regular reporting through Digital Cleaning Log</li> </ul>	Certified disinfection specialists	<ul style="list-style-type: none"> <li>Occupant Communication Kits</li> <li>EPA-registered disinfectants qualified for use against SARS-CoV-2</li> <li>Proper PPE</li> <li>Microfiber program</li> </ul>
<b>Step 3: Broader Disinfection</b> Reset your full facility to higher standards beyond high touch point cleaning.	Intervals range from nightly to quarterly	<ul style="list-style-type: none"> <li>Large area disinfection</li> </ul>	Certified disinfection specialists	<ul style="list-style-type: none"> <li>Electrostatic sprayers</li> <li>Hospital grade EPA-registered disinfectants with faster kill time and broader pathogen spectrum if an outbreak has occurred in your facility</li> </ul> <p><b>Continued product testing:</b></p> <ul style="list-style-type: none"> <li>ATP testing for evidence-based validation</li> <li>UV devices and UVC lighting</li> </ul>

Visit [EnhancedClean.com](https://EnhancedClean.com) to learn more.

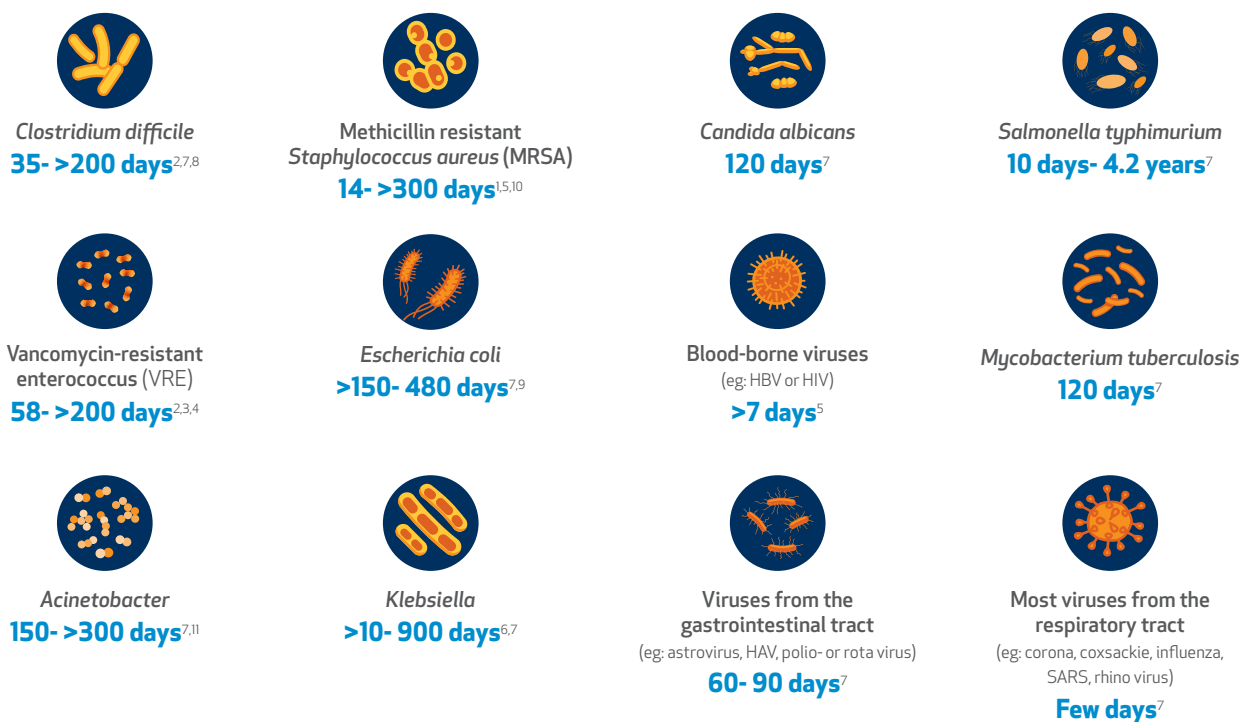
# How Long Can Pathogens Survive?

Without intervention, common bacteria and viruses can survive and spread on surfaces for a remarkable amount of time. See below to learn how long the average pathogen can live on untreated surfaces.

## How long can these pathogens survive on surfaces?



Implementing a routine disinfection program can help prevent threats like these from lingering in your facility while keeping your occupants healthier, more confident, and productive.





## The Role and Benefits of Testing and Reporting

Digital Cleaning Log	ATP Evidence Based Testing	IAQ Testing
<p><b>What is it?</b></p> <p>Our Digital Cleaning Log is a proprietary tool that ABM has developed to capture, archive, and report on the cleaning being performed. This data is pulled into a reporting dashboard with KPIs and trends.</p>	<p><b>What is it?</b></p> <p>Evidence-based testing (EBT) with adenosine triphosphate (ATP) is an add-on to objectively measure the efficacy of the EnhancedClean program and offers a scientific measurement of the cleanliness of your surfaces.</p>	<p><b>What is it?</b></p> <p>Indoor Air Quality testing is designed to measure a building's air quality against the latest industry best practices. IAQ testing typically involves collecting air samples, monitoring potential exposures to pathogens and pollutants, swabbing surfaces, and examining air flows inside buildings to identify, reduce and remove air pollutants.</p>
<p><b>Who does it?</b></p> <p>As our team members perform work, they document the work performed through our digital application, where subscribed.</p>	<p><b>Who does it?</b></p> <p>A certified facilitator will regularly perform the testing within 30 minutes of cleaning and disinfection when a testing program has been implemented.</p>	<p><b>Who does it?</b></p> <p>An ABM team member will coordinate IAQ testing during your initial risk assessment and periodically after program implementation.</p>
<p><b>Unique benefits</b></p> <p>Through the digital cleaning log, we are able to report out on what services were performed and when. With your ABM partners, these reports can be used for proactive management of services. These reports also enable you to provide increased reassurance to your occupants they are entering a clean space.</p>	<p><b>Unique benefits</b></p> <p>Evidence-based testing further reinforces that trust and peace of mind with scientific proof that your disinfection program is effective. Going beyond the visual assessment of cleanliness, the process of ATP testing can help fine-tune your disinfection schedule to maximize occupant safety.</p>	<p><b>Unique benefits</b></p> <p>IAQ testing allows us to both scientifically measure a facility's indoor air quality to ensure that new IAQ improvement measures are effective.</p>

### COMBINED BENEFIT

Utilizing ATP and IAQ testing and employing our Digital Cleaning Log gives you total insight into the efficacy of your cleaning and disinfection programs. This allows proactive management of your services and provides greater peace of mind for both you and your occupants. This way, you know with certainty that your facilities are being cared for regularly and effectively.

# What makes our approach to total building health different?



## Designed with Interdisciplinary Expertise

Our Expert Advisory Council, composed of leading experts in infectious disease, industrial hygiene, and engineering, advises on many aspects of ABM's business, including our proprietary EnhancedClean™ and EnhancedFacility™ programs, to provide an independent third-party perspective to support ABM in the value we deliver to clients. This includes continued efforts to maintain consistent, high quality standard operating practices; offer clients the latest equipment and technologies; and equip our team members with best-in-class training and certifications.



## Trained & Certified Frontline Team Members

ABM's Certificate Program in Janitorial Cleaning for Infection Control – the curriculum our EnhancedClean Facilitators complete – has received ANSI accreditation. This external validation speaks to the rigor of our training program. In turn, Disinfection Specialists are internally certified. Online learning modules complement in-person training including the proper use of PPE, disinfectants, equipment use, and more. A highly specialized level of training is given to our team members using electrostatic sprayers and other newly adopted disinfection methods. Managerial training will ensure supervisors have the tools and knowledge to effectively instruct on methods and oversee the process.



## Unmatched Resources and Supply Chain

Planning for the necessary supplies is a crucial part of infection control and ABM is well-positioned to be first in line for products from our supply chain network. Not only that, but our Expert Advisory Council vets our disinfectants and equipment to ensure that every component of our program is effective, safe, and contributes to delivering healthy spaces developed to reflect recommendations of the Centers for Disease Control and Prevention (CDC), the World Health Organization (WHO), the Occupational Safety and Health Administration (OSHA), the U.K. National Health Service (NHS), and other government agencies.



## Funding Assistance Is Available

It is possible to both improve facilities and address funding shortfalls. ABM has the unique ability to collaboratively work with clients to help overcome budget challenges to fund capital improvements before the capital is available and pay over time with generated savings. Get key projects in place more quickly and make sure capital is focused on the outcomes and benefits that you need now.

Funding assistance is available and can help you address health and safety concerns now for both public and private entities. ABM's experts can also help identify grant and low-cost loan opportunities.



# Instilling Confidence: Third-Party Validation of Our Training Program



ABM's training program for EnhancedClean Facilitators has been accredited by the ANSI National Accreditation Board. This accreditation means that ABM's training program was proven to adhere to rigorous third-party standards, adding validation that all EnhancedClean work is supported by a best-in-class training program.



## What is this accreditation?

ABM's EnhancedClean Facilitators complete a training program in Janitorial Cleaning for Infection Control. This training program has been accredited under ANSI National Accreditation Board's (ANAB) Certificate Accreditation Program (CAP).

This accreditation validates that our training program underwent rigorous third-party, independent review and that it adheres to best-in-class standards.



## What is ANSI and ANAB?

ANSI stands for the American National Standards Institute. They are a globally recognized, non-profit organization that establishes standards for training programs, processes, and products. ANAB is a group within ANSI that focuses on accreditation. ANAB standards for the ANSI National Accreditation Board.

In other words, ANSI is a trusted organization that establishes standards ("What does great look like?"), and ANAB is the branch within the organization that validates a program that meets those standards.



## What does this accreditation mean for my facility?

This accreditation adds a third-party level of validation that team members servicing your space have best-in-class training that aligns with the desired training outcomes. This should instill additional confidence about our EnhancedClean program. Not only was our program built in consultation with internal and external subject matter experts (SMEs), but our training program has also been vetted by a trusted, third-party organization.



**ENHANCED**Facility™ 

**ENHANCED**Clean™ 

From the things you touch to the air you breathe, ABM delivers healthier facilities with the latest infection control approaches and innovations backed by experts. Together, EnhancedClean and EnhancedFacility help reduce viral transmission on surfaces and in the air. We can help you build greater occupant trust and confidence regarding your commitment to their health and safety, while improving building health through data-driven insights.

Visit [EnhancedFacility.com](https://EnhancedFacility.com) and [EnhancedClean.com](https://EnhancedClean.com) to learn more or call 866.624.1520 and press option 3.





Building Value

866.624.1520  
EnhancedFacility.com  
EnhancedClean.com

## ABOUT ABM

ABM (NYSE: ABM) is a leading provider of facility services in the United States and various international locations. ABM's comprehensive capabilities include janitorial, electrical & lighting, energy solutions, facilities engineering, HVAC & mechanical, landscape & turf, mission critical solutions and parking, provided through stand-alone or integrated solutions. ABM provides custom facility solutions in urban, suburban and rural areas to properties of all sizes — from schools and commercial buildings to hospitals, data centers, manufacturing plants and airports. ABM Industries Incorporated, which operates through its subsidiaries, was founded in 1909. For more information, visit [ABM.com](http://ABM.com).